

How BAMB Supports Great Designs

CIRCULAR ECONOMY IN THE BUILT ENVIRONMENT
LAUNCH OF THE BAMB STAKEHOLDER NETWORK

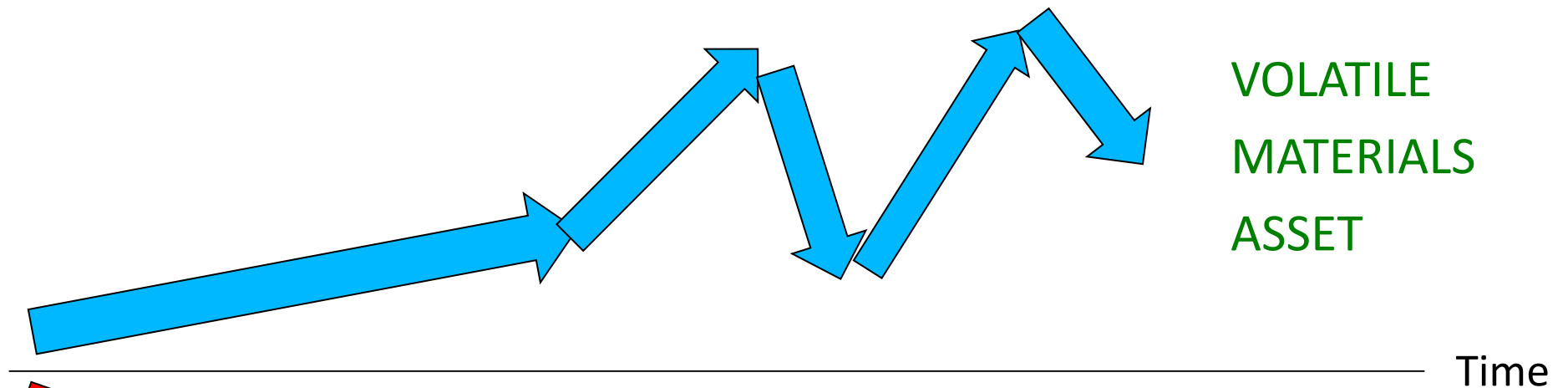
Katja Hansen

Brussels

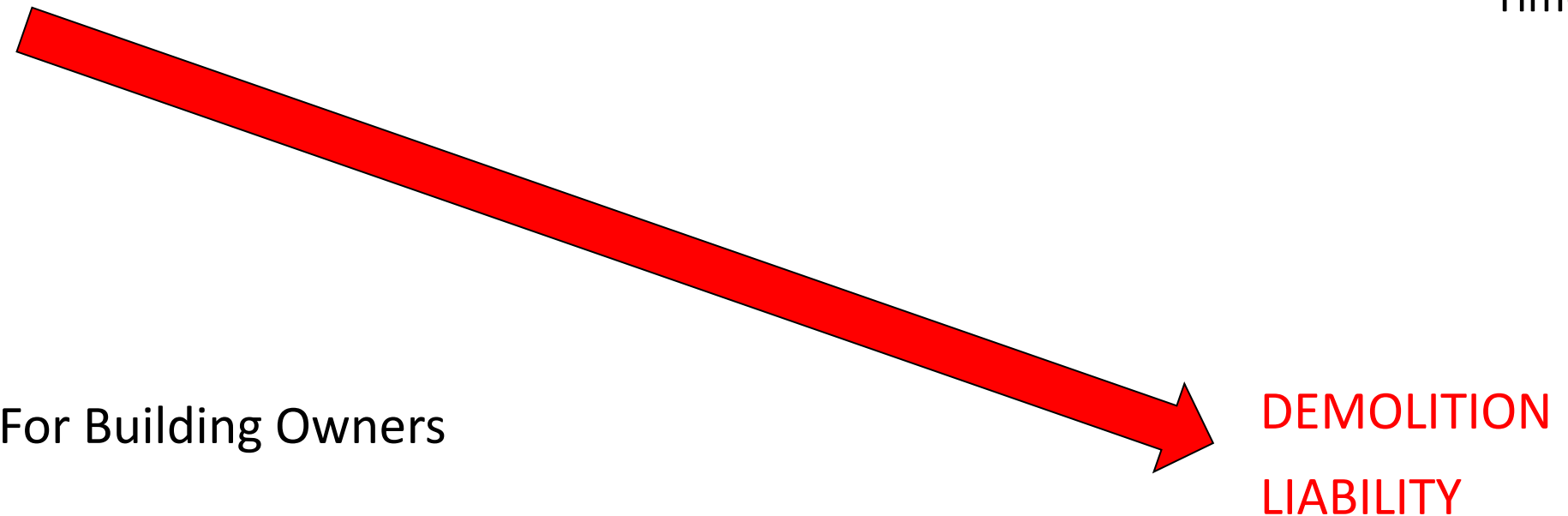
May 3, 2016

Materials value in commodities markets vs. buildings

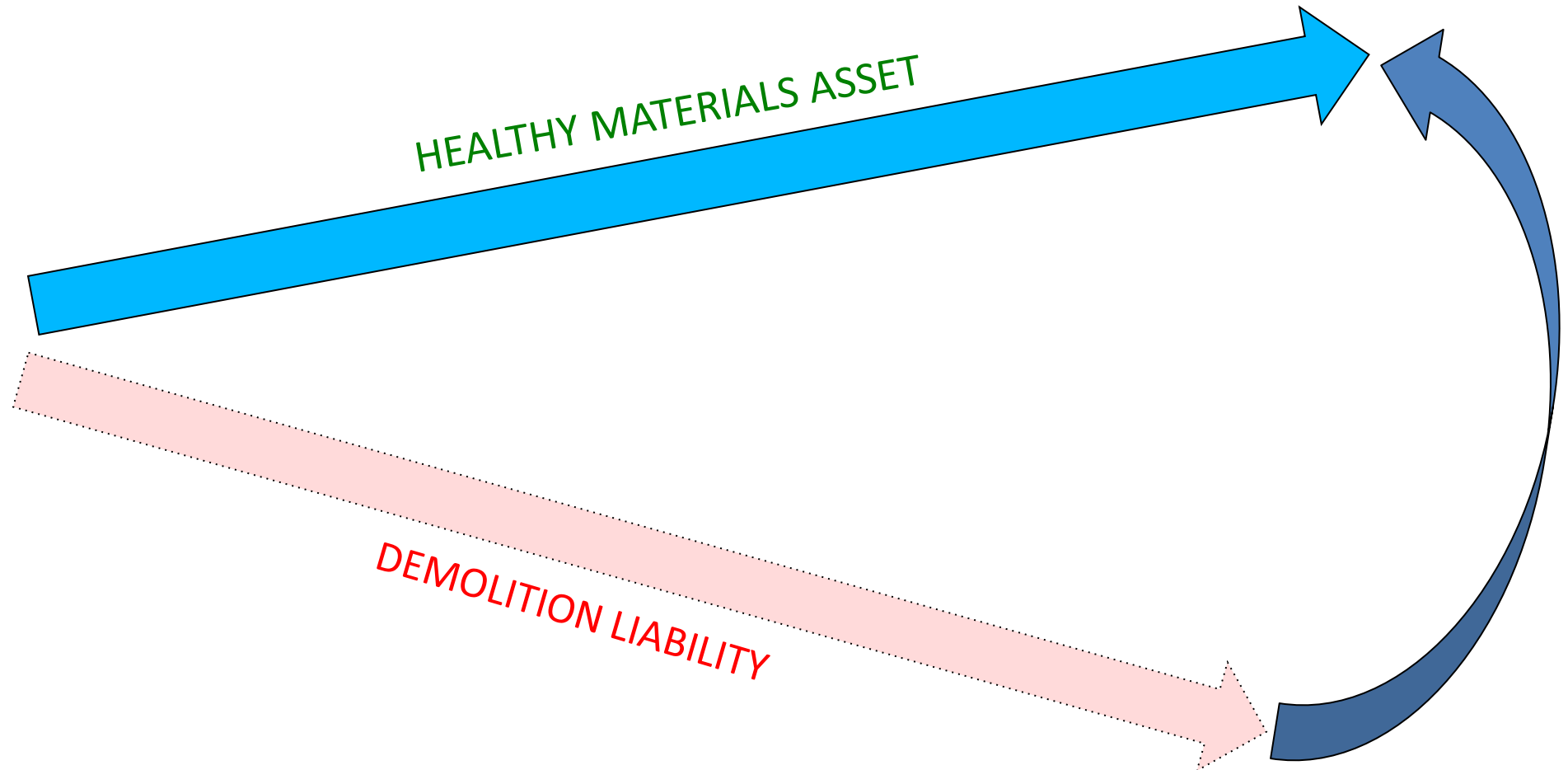
In Commodities Markets



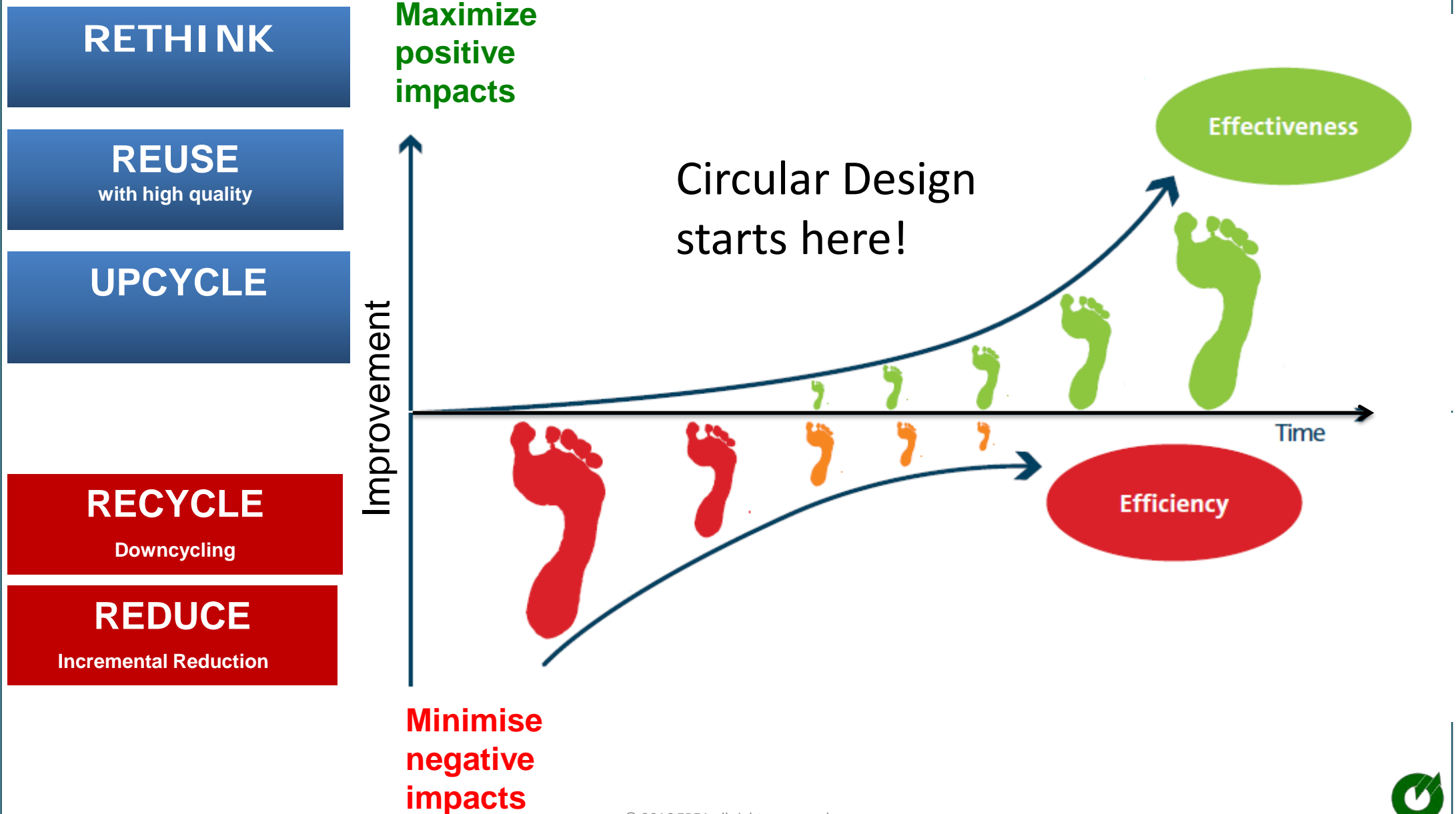
For Building Owners



The Materials Potential. Improve Quality.

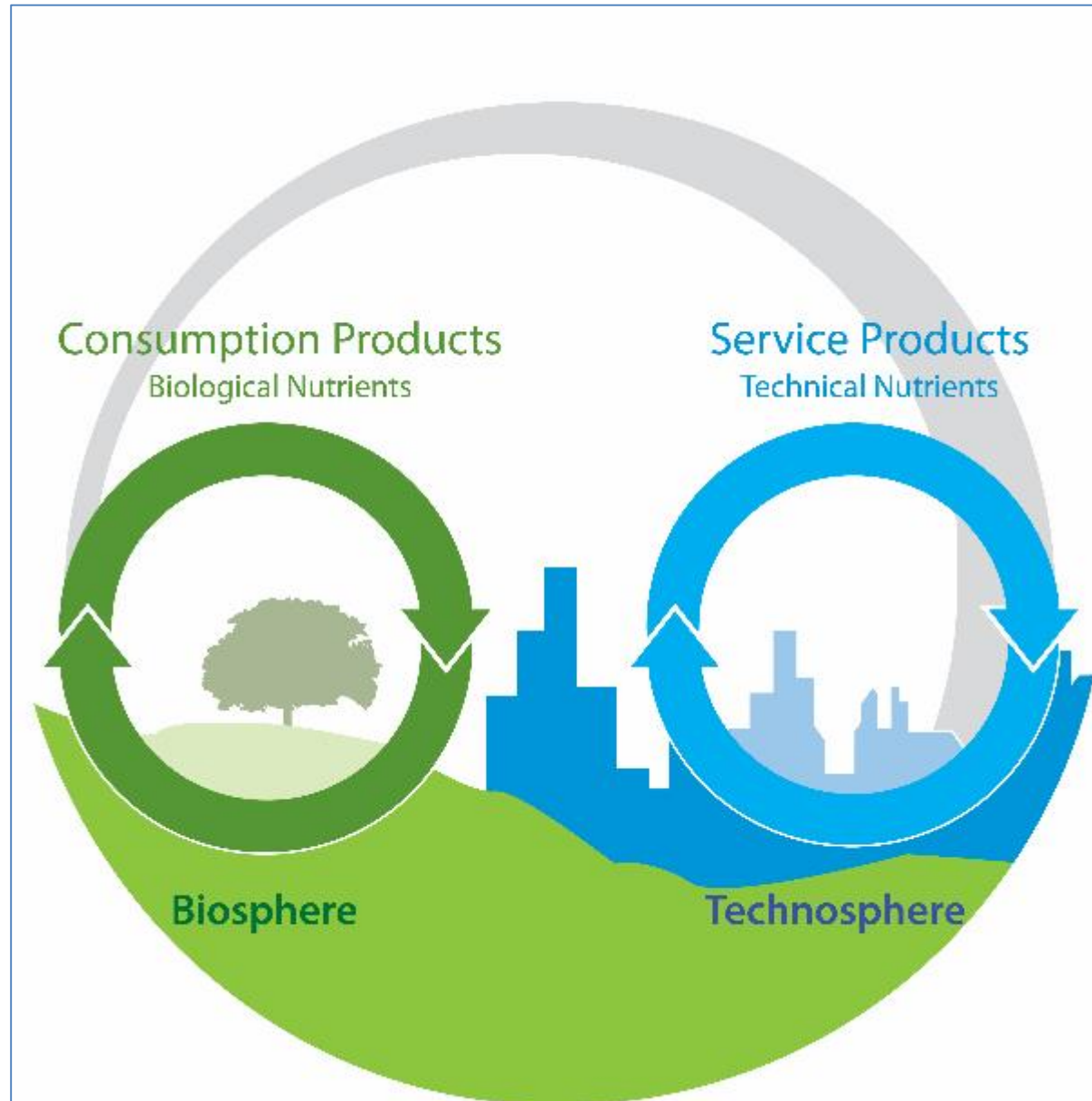


The time is right for positive impacts.

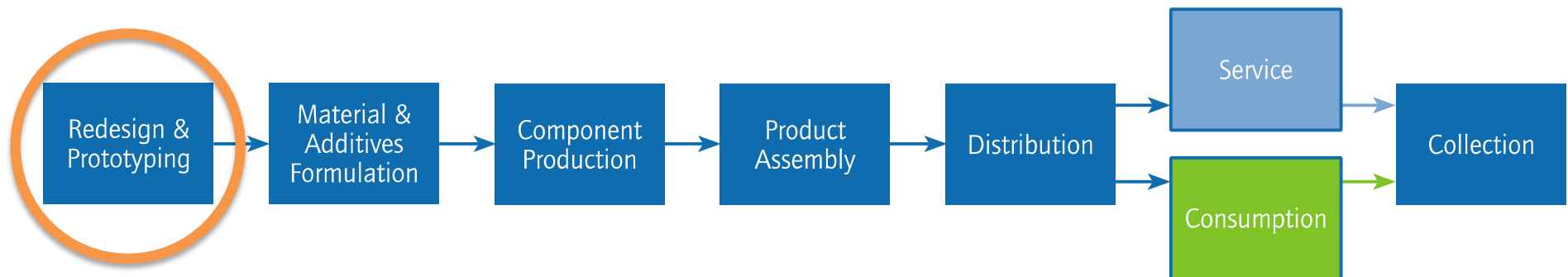


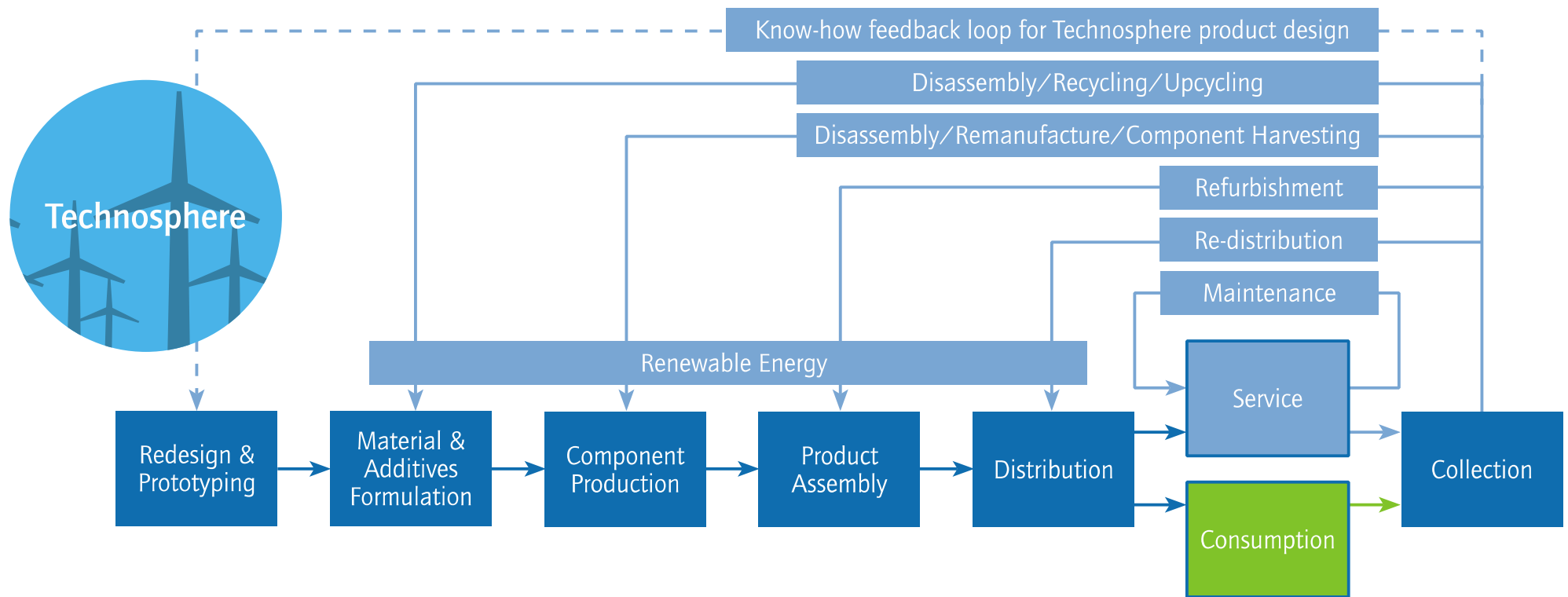
Cradle to Cradle cycles.

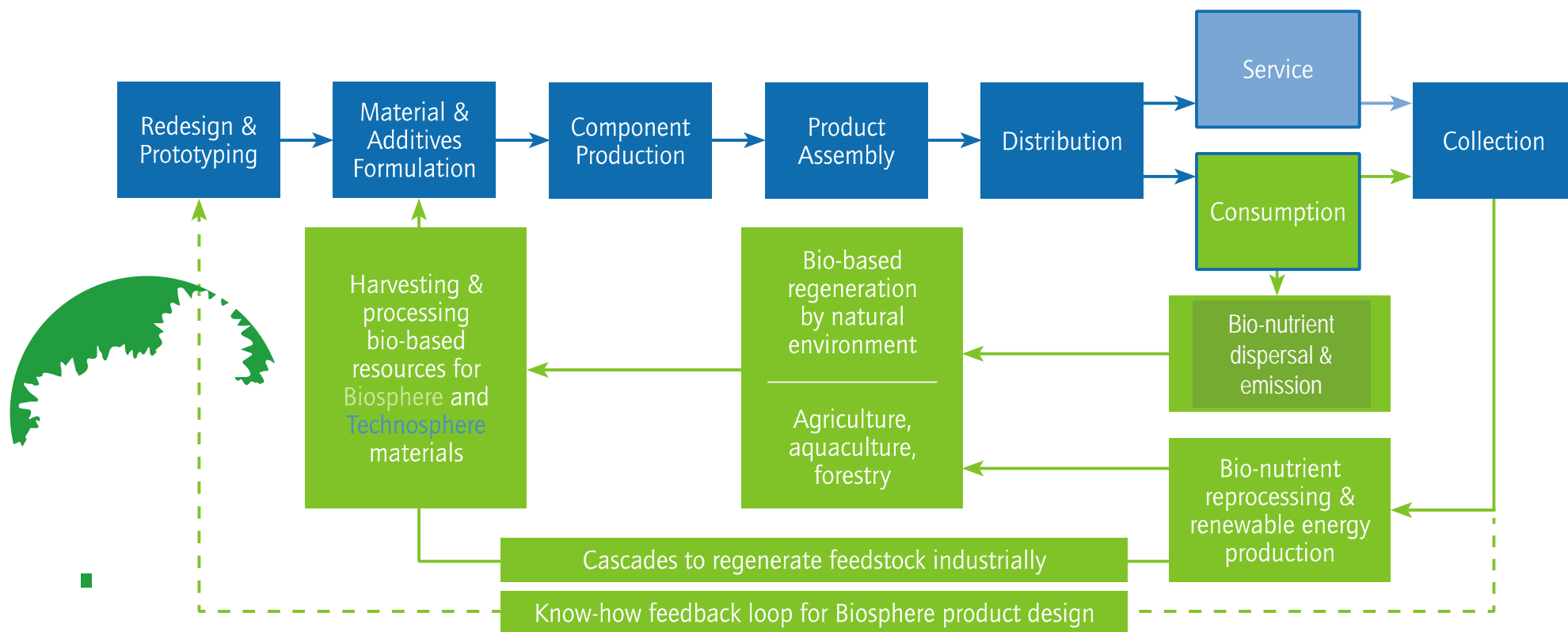
Basis for Circular Economy products.



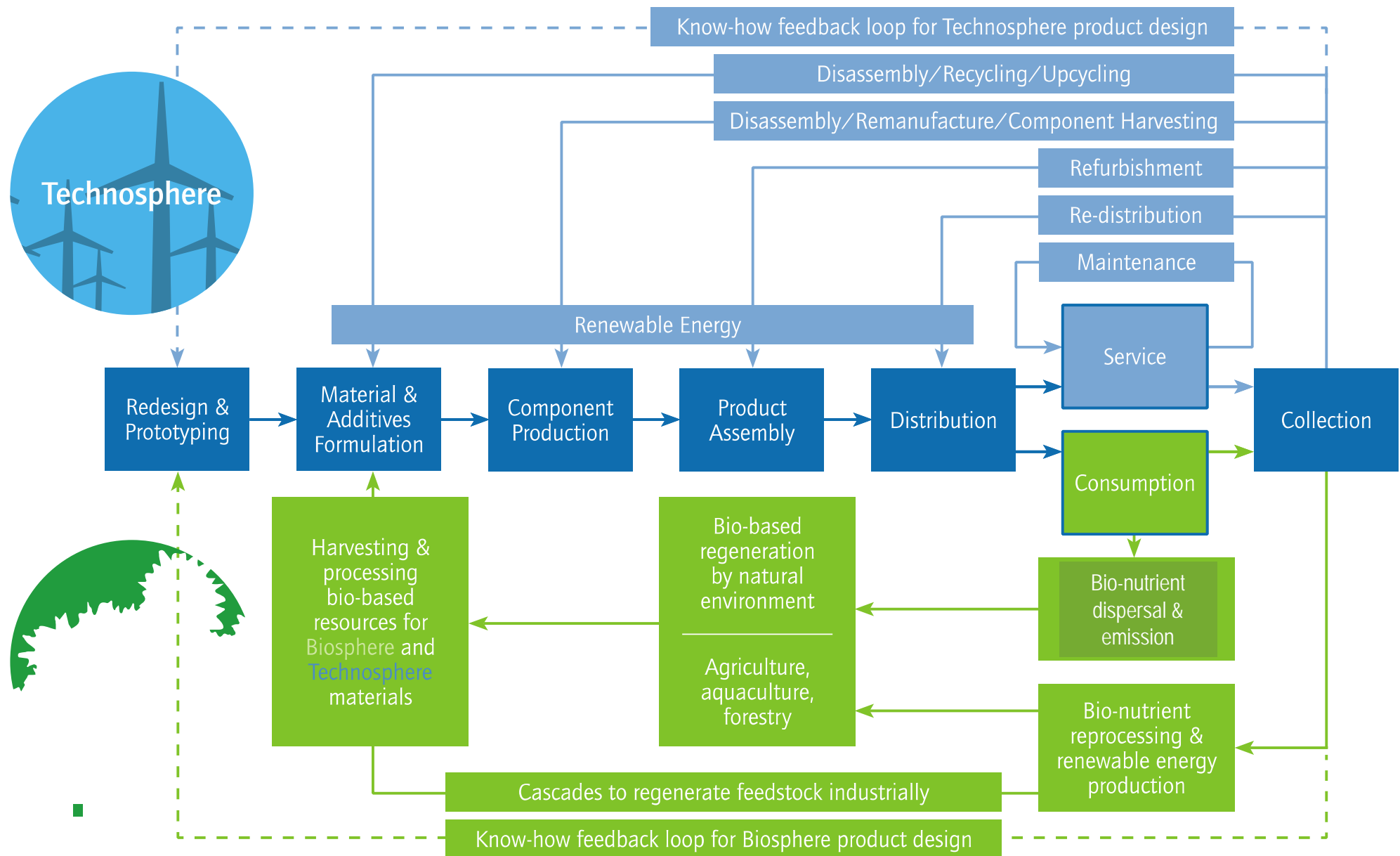
Circular Economy value chain starts with design







Circular Economy cycles





Ronneby preschool

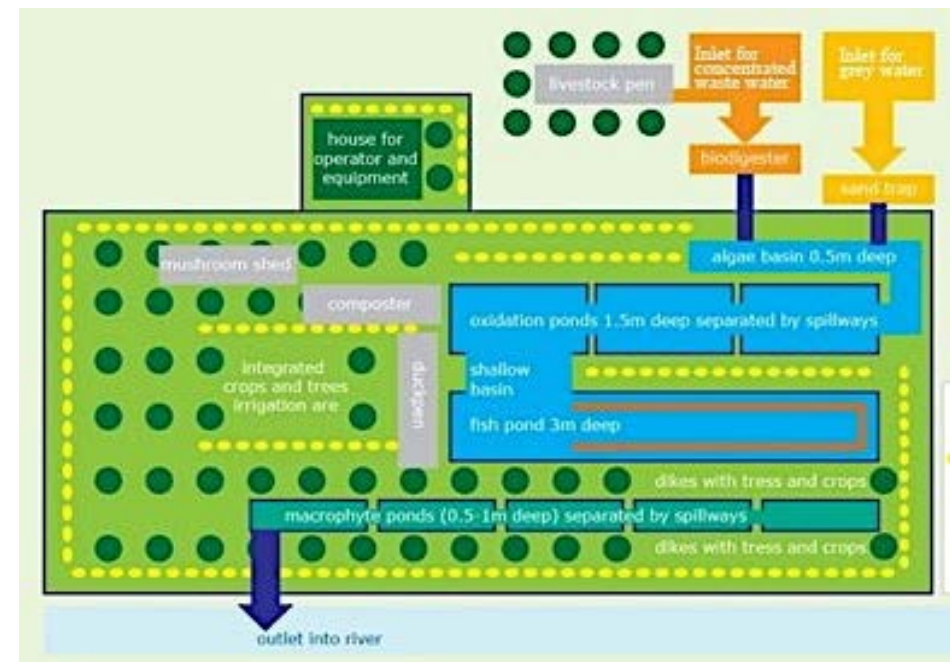


Park 2020 as a business park

Designs using circular approaches



Venlo City Hall



Bionutrient Recycling facility

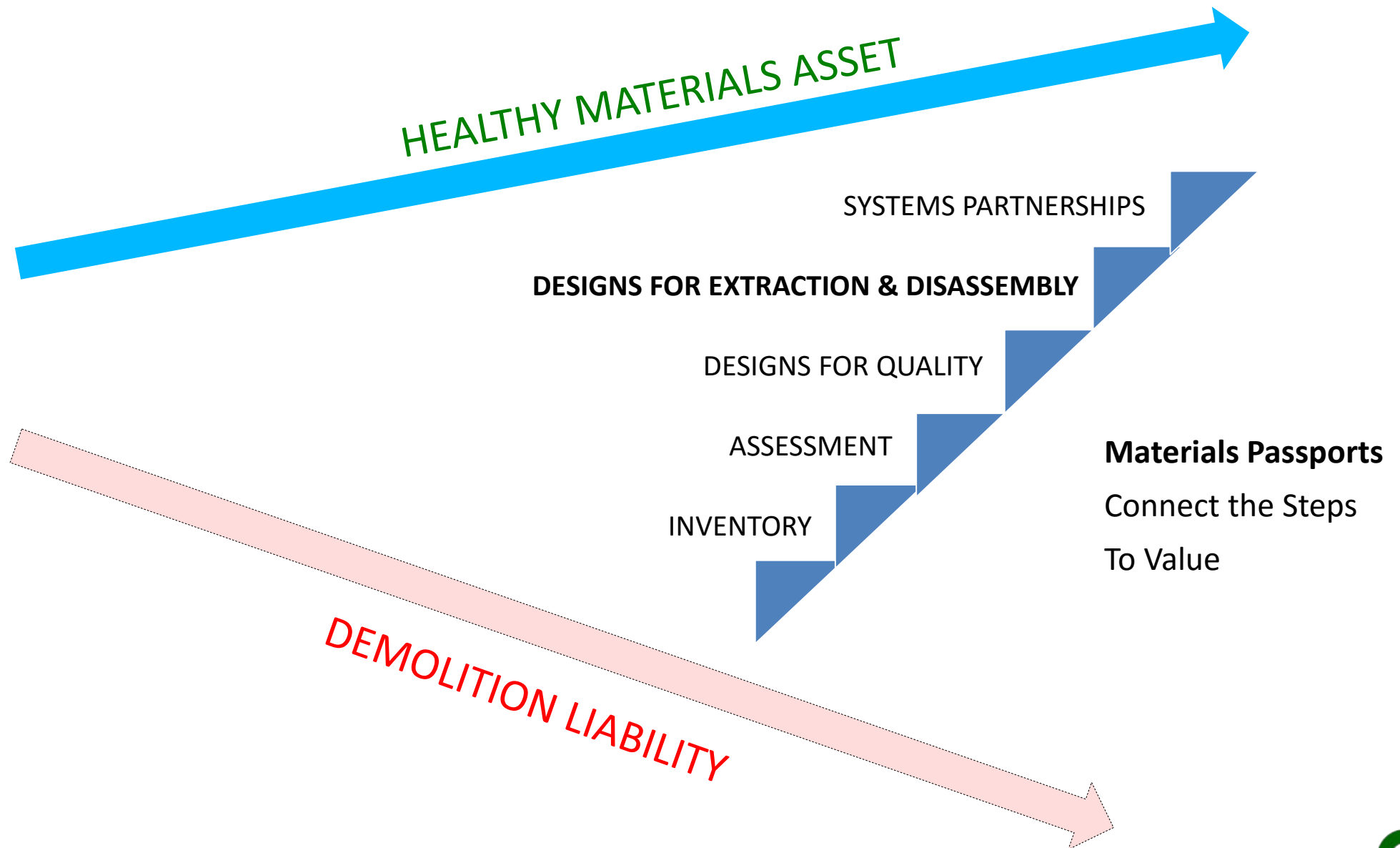
Materials Passports are the one-stop shop for product circularity

To encourage circular product designs, material recovery systems, and chain of possession partnerships.

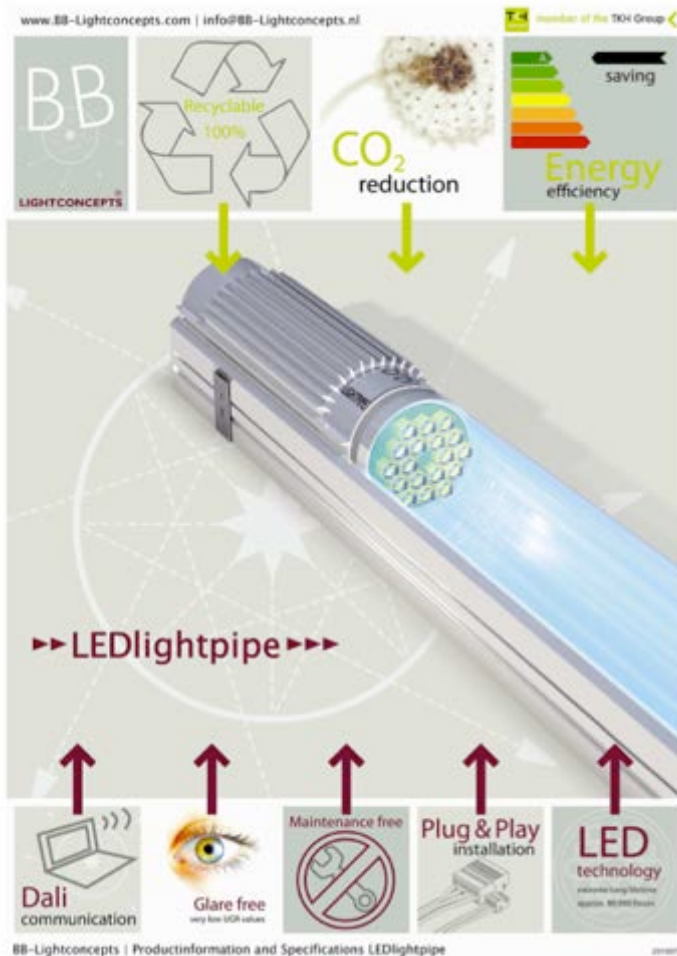
To improve the quality, value, and security of supply for materials.



Roadmap to value



The example of light as a service

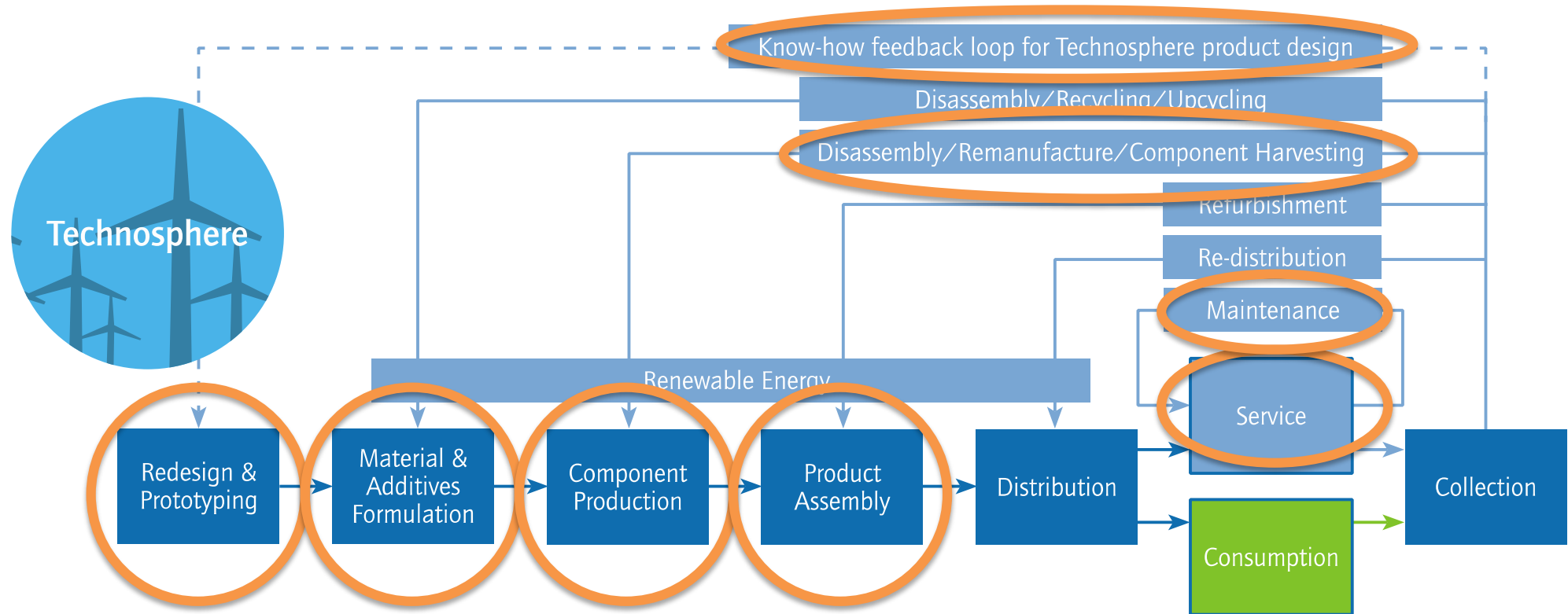


- Capex savings from light leasing or takeback
- Improved value for flex-use & materials re-use
- Savings from quicker assembly, installation
- Functionality & quality with glare-free lighting
- Opex savings from managing energy use



Integrated with
Park-Assist for
functionality

Value propositions described by passport



Every item describes added value.

Systems that improve air quality



KE FIBERTEC CRADLEVENT®
TEXTILE AIR CONDUITS
(Blue in photo)

Desso Airmaster

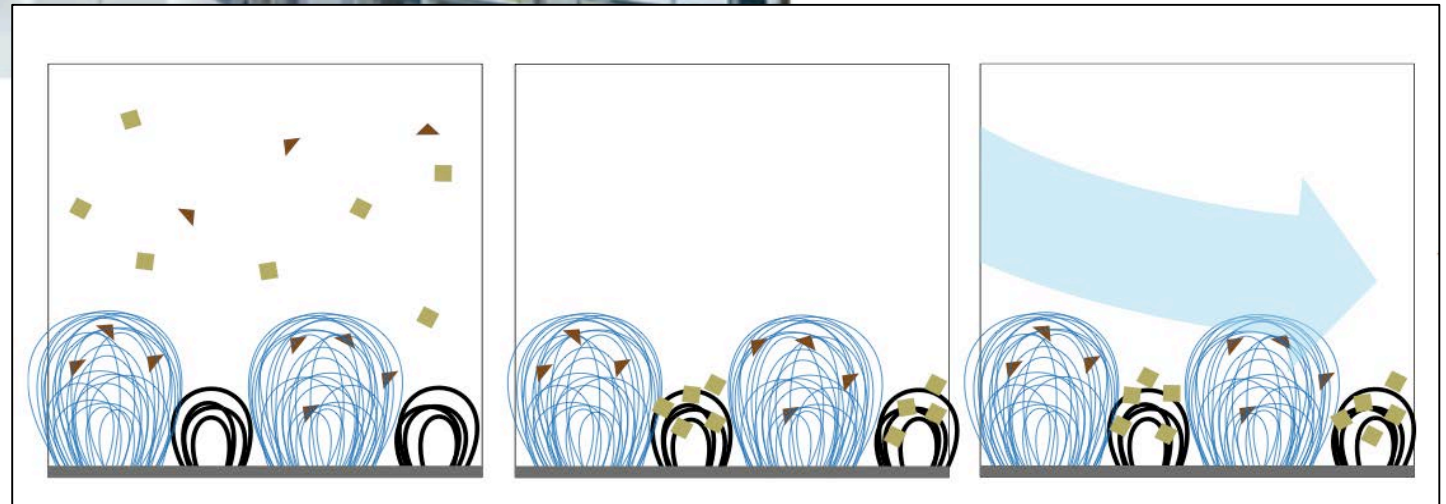


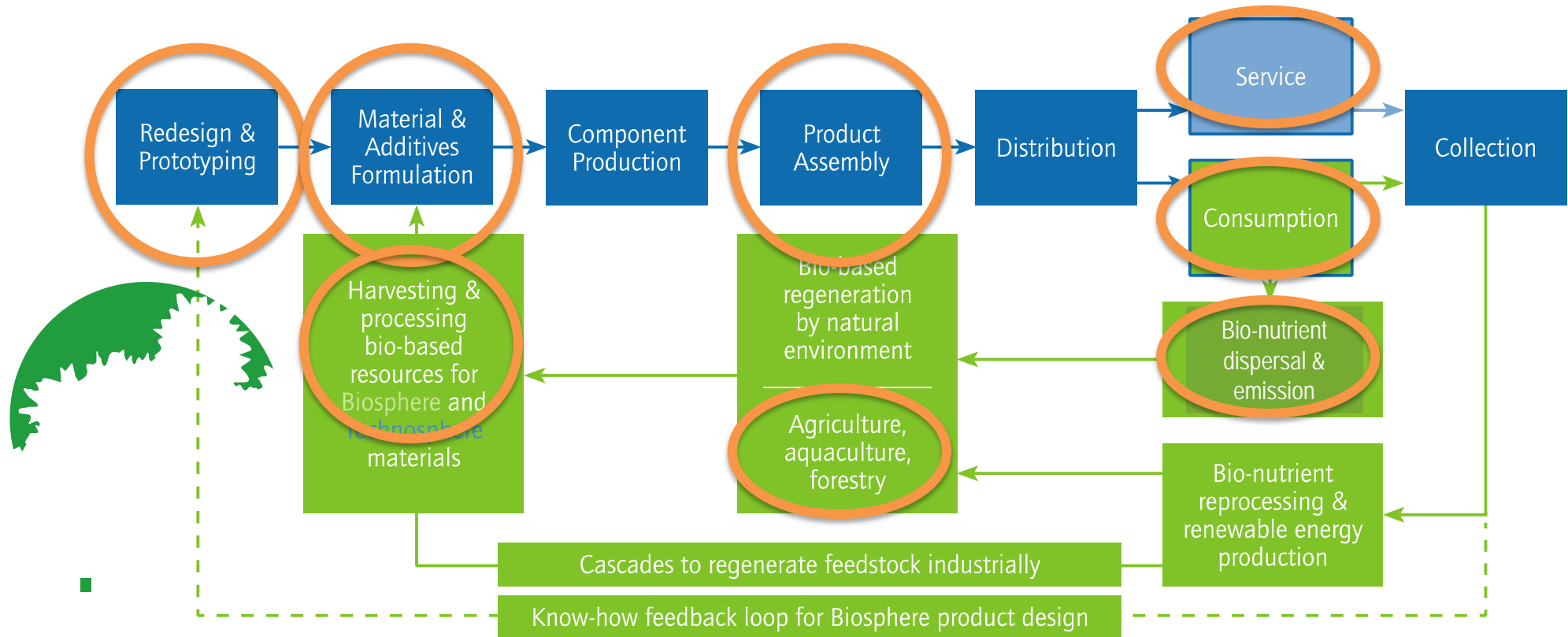
Image Desso

The example of fertilizer extracted from waste water

- Removing phosphate from wastewater reduces water treatment energy.
- Commercial slow-release fertilizer more beneficial for agriculture.
- Designed for Bio-Availability.



Value propositions described by passport



Every item describes added value.



Green Fence

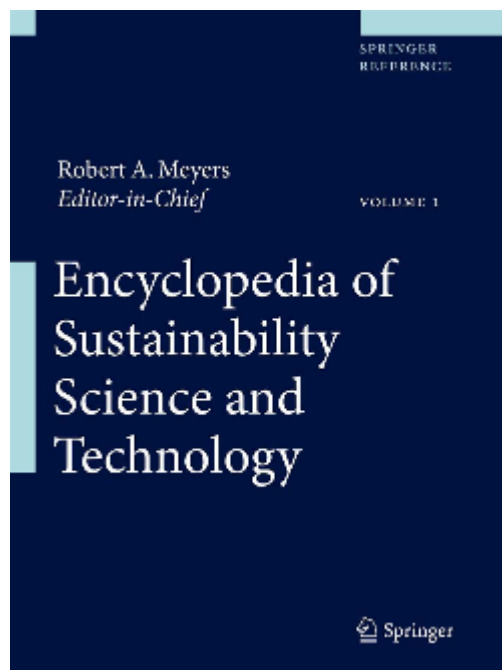
Images U. Wageningen



Bicycle parking as bee hotel



Buildings Made of
Products Designed for Reversibility
Are Valuable Material Banks!



RESOURCE RE-PLETION

Role of Buildings

And Introducing Nutrient Certificates a.k.a. Materials Passports as a Counterpart to Emissions Trading Schemes

KATJA HANSEN, MICHAEL BRAUNGART, DOUGLAS MULHALL

Published by The Springer Encyclopedia of Sustainability Science and Technology;
Meyers, Robert A. (Ed.) 2013, 10500 p. 2500 illus. in color. In 12 volumes, not
available separately

Thank you!



Katja Hansen

hansen@braungart.com

EPEA INTERNATIONALE UMWELTFORSCHUNG GMBH

Trostbrücke 4

20457 Hamburg, Germany

www.epea.com

Follow us with c2cworld at

