



## JOIN OUR STAKEHOLDER NETWORK

Get involved today by joining our Stakeholder Network or one of the six Special Interest Groups:

- Materials Passports
- Reversible Building Design
- Data Management (including BIM)
- Circular Building Business Models
- Case Studies and Pilots
- Policies and Standards

It is essential that BAMB tools and products are useful and applicable across the building supply chain. The knowledge and experience our stakeholders own is essential for BAMB so we are actively seeking feedback, opinions, input and participation from all stakeholders who would like to be involved.

## FOLLOW US:

Subscribe to the BAMB newsletter



[facebook.se/bamb2020](https://facebook.se/bamb2020)



[twitter.com/BAMB2020](https://twitter.com/BAMB2020)



[linkedin.com/bamb2020](https://linkedin.com/bamb2020)



[www.bamb2020.eu](http://www.bamb2020.eu)



# BAMB

## BUILDINGS AS MATERIAL BANKS

*Integrating Materials Passports with Reversible Building Design to Optimise Circular Industrial Value Chains*



This project has received funding from the European Union's Horizon 2020 research and innovation programme under grant agreement No 642384

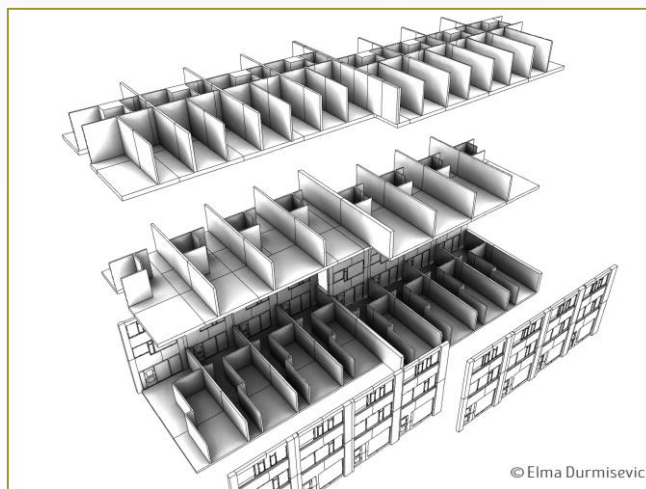
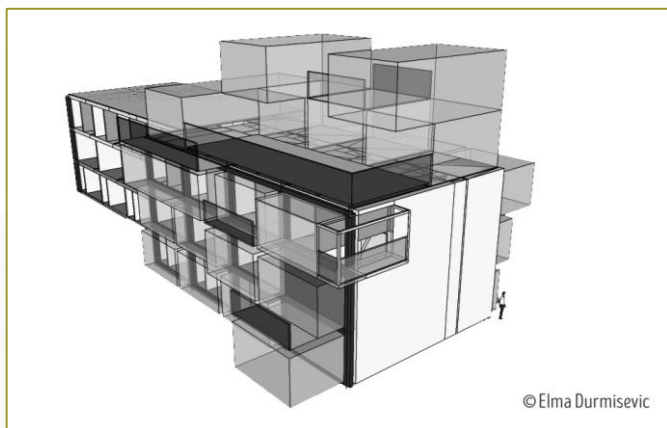
## THE BAMB PROJECT - BUILDINGS AS MATERIAL BANKS

In BAMB, 16 partners from 8 European countries are working together with one mission - enabling a systemic shift in the building sector by creating circular solutions.

Today, building materials end up as waste when no longer needed, with effects like destroying ecosystems, increasing environmental costs, and creating risks of resource scarcity. To create a sustainable future, the building sector needs to move towards a circular economy.

Whether an industry goes circular or not depends on the value of the materials within it - worthless materials are waste, while valuable materials are recycled. Increased value equals less waste, and that is what BAMB is creating - ways to increase the values of building materials.

BAMB will enable a systemic shift where dynamically and flexibly designed buildings can be incorporated into a circular economy.



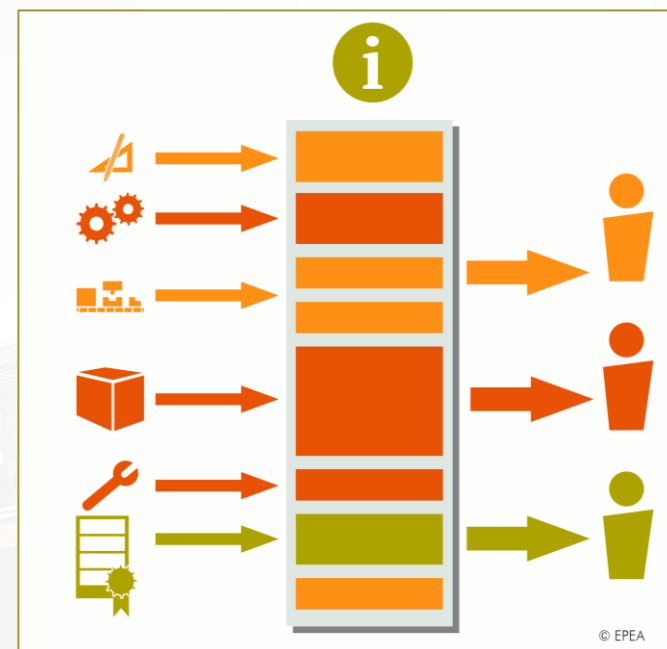
### THE KEY IS VALUE

Through design and circular value chains, materials in buildings sustain their value - in a sector producing less waste and using less virgin resources. Instead of being to-be waste, buildings will function as banks of valuable materials - slowing down the usage of resources to a rate that meets the capacity of the planet.

The project is developing and integrating tools that will enable the shift: Materials Passports and Reversible Building Design - supported by new business models, policy propositions and management and decision-making models. During the course of the project these new approaches will be demonstrated and refined with input from 6 pilots. BAMB project started in September 2015 and will progress for 42 months as an innovation action within the EU funded Horizon 2020 programme.

## MATERIALS PASSPORTS

Materials Passports will provide the necessary information about materials, products and components for their circular use and the support of reversible building design. Within the project, 300 Materials Passports for various products, components or materials will be developed together with a software solution.



## REVERSIBLE BUILDING DESIGN TOOLS

The Reversible Building Design tools will inform designers and decision makers about the transformation capacity, reuse potential and the impacts of design solutions during the conceptual design phase.